

MONTHLY MEMBERSHIP PROGRESS REPORT

LOCATION INDIANA

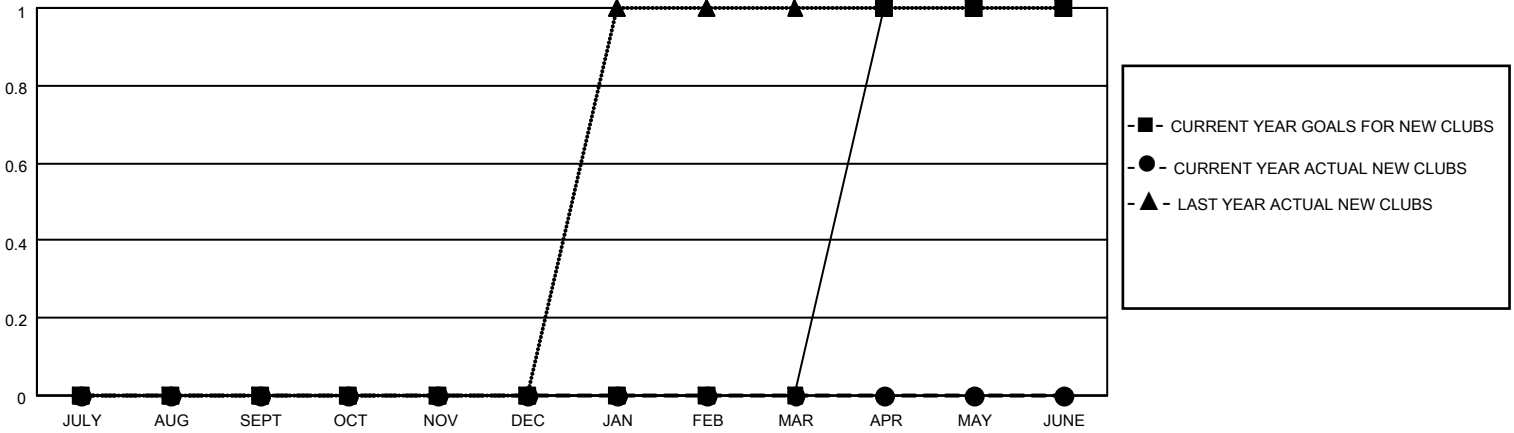
District 25 A

Results as of: 6/30/2023

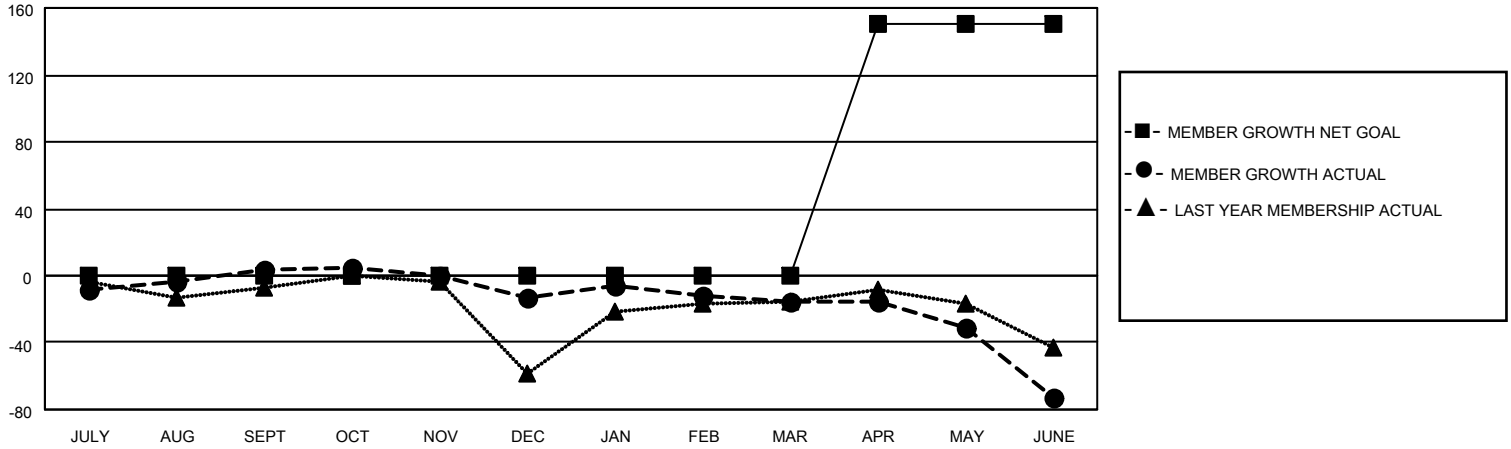
Clubs			
RESULTS FOR 2022-2023			
QUARTER	NEW CLUB GOAL	NEW CLUBS	DROPPED CLUBS
JULY/AUG/SEPT	0	0	0
OCT/NOV/DEC	0	0	0
JAN/FEB/MAR	0	0	0
APR/MAY/JUNE	1	0	1

Members			
RESULTS FOR 2022-2023			
QUARTER	MEMBER GROWTH NET GOAL	MEMBER GROWTH ACTUAL	DROPPED MEMBERS ACTUAL (including transfers)
JULY/AUG/SEPT	0	37	30
OCT/NOV/DEC	0	16	32
JAN/FEB/MAR	0	21	23
APR/MAY/JUNE	150	33	77

GOALS AND ACTUAL NEW CLUBS CUMULATIVE



GOALS AND ACTUAL MEMBERS CUMULATIVE



DROPPED CLUBS: 1

29 CLUBS OF 50 ADDED 1 OR MORE NEW MEMBERS

GENDER DISTRIBUTION

MALE	719 (63.63%)
FEMALE	407 (36.02%)
NON BINARY	0 (0.00%)
PREFER NOT TO ANSWER	4 (0.35%)

DROPPED MEMBERS

[CLICK HERE FOR CUMULATIVE MEMBERSHIP DATA](#)

DECEASED	24
CLUB CANCELLED	0
OTHER	138
TOTAL	162

TOTAL FAMILY UNIT MEMBERS	299
FAMILY MEMBERS PAYING HALF DUES	157